

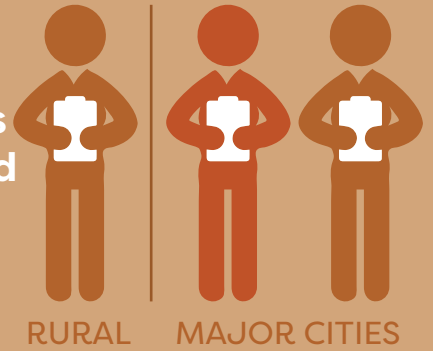
# THE CASE FOR BETTER HEALTH CARE:

Rural areas make a significant contribution to the nation's economy

Resources and rural industries alone contribute 80% of Australia's exports



Rural areas have fewer health providers (per capita) across most registered professions\*



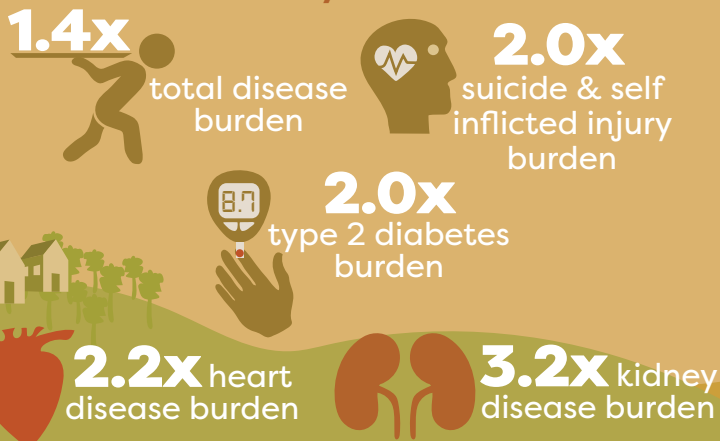
\*E.g. doctors, dentists, pharmacists and allied health

Rural doctors have lower bulk billing rates despite communities having lower incomes

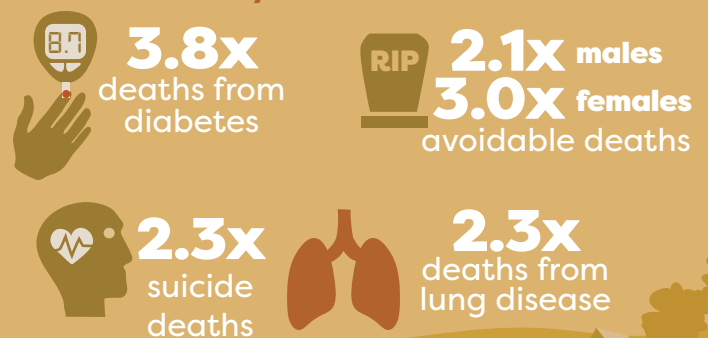


## Burden of disease and deaths increase with remoteness

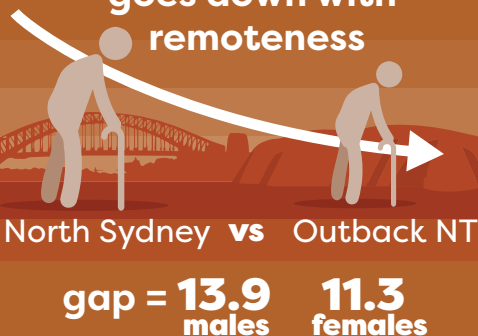
Compared to major cities, remote and very remote areas have:



Compared to major cities, very remote areas have:



Life expectancy (years) goes down with remoteness



People in very remote areas have lower rates of bowel, breast and cervical cancer screening

